



IxNetwork Report

Test: RFC2544 - Throughput/Latency

Test Date: 7/30/2022 13:10:35

www.ixiacom.com
www.ixiacom.com/support

Table of Contents

1.	Cover	1
2.	Info	3
3.	Port Map	4
4.	Aggregate Graphs	5
5.	IterationCharts	13
6.	Aggregated Results	19
7.	Aggregated Results Per Iteration	20
8.	Per Flow Results	25
9.	Iteration Data	27
10.	Theoretical Max Rates	36

RFC2544 - Throughput/Latency - Info**Test Information****Product Information**

Product Label :	S4600-24X2C
Product Version :	S4600_NDDOS 12.4(1)
Serial Number :	U50LA650213
Comments :	

Test Settings

Date Executed :	7/30/2022
Time Executed :	13:10:35
User Name :	NDD.COM
Number of Trials Executed :	1
Stream Duration (sec) :	20

Output Parameters

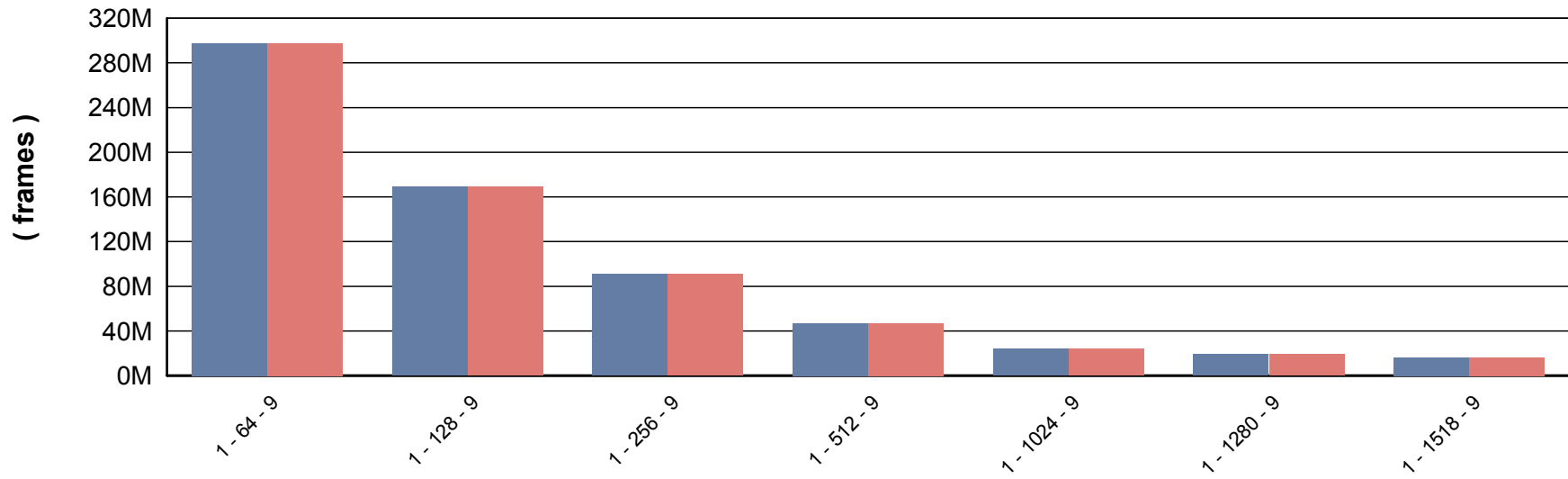
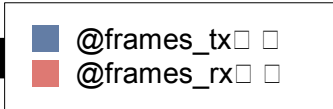
Number of Trials Passed :	N/A
Test Duration :	00:35:10

RFC2544 - Throughput/Latency - Port Map Information

Port Map :	Tx Port	Tx Speed (Mbps)	Rx Port	Rx Speed (Mbps)
	10.12.100.101:1	10000	10.12.100.101:1:2	10000

RFC2544 - Throughput/Latency - Aggregated Graph

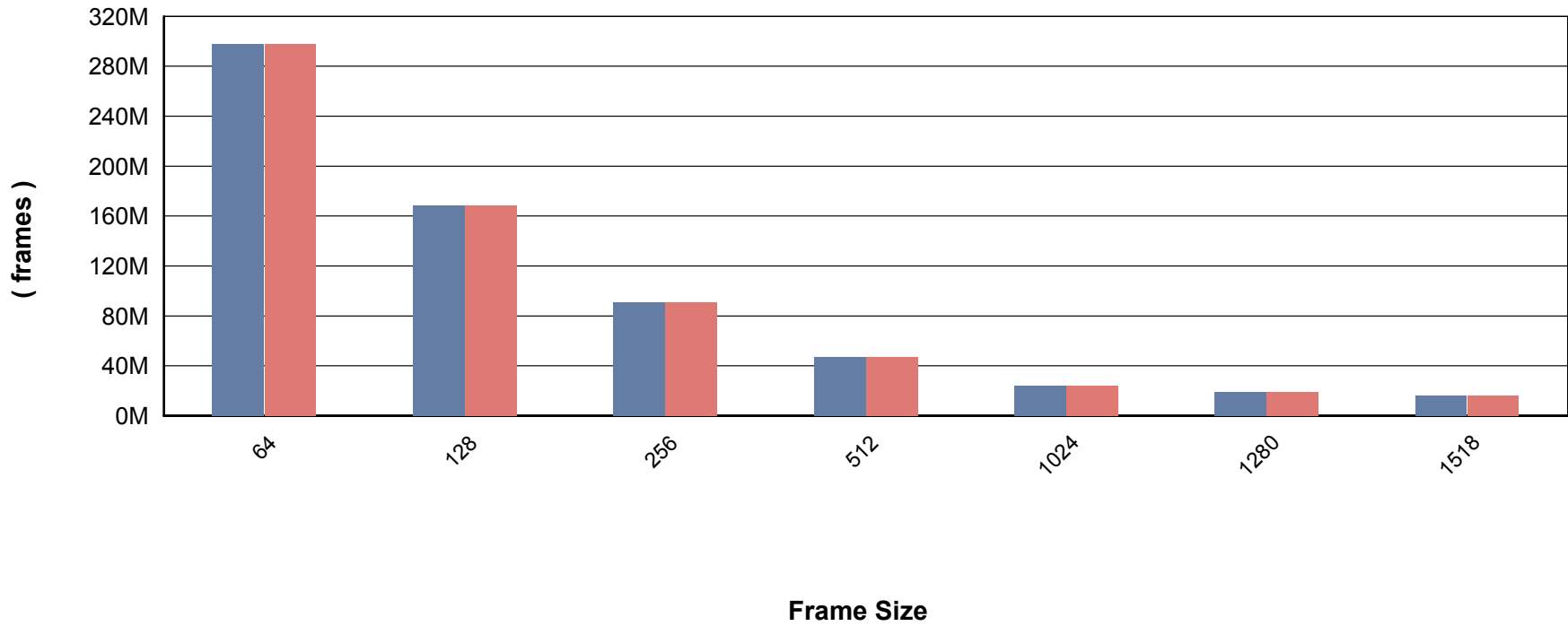
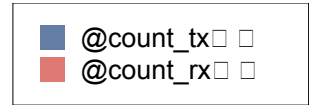
Total Frames Transmitted and Received



Trial - Framesize - Iteration

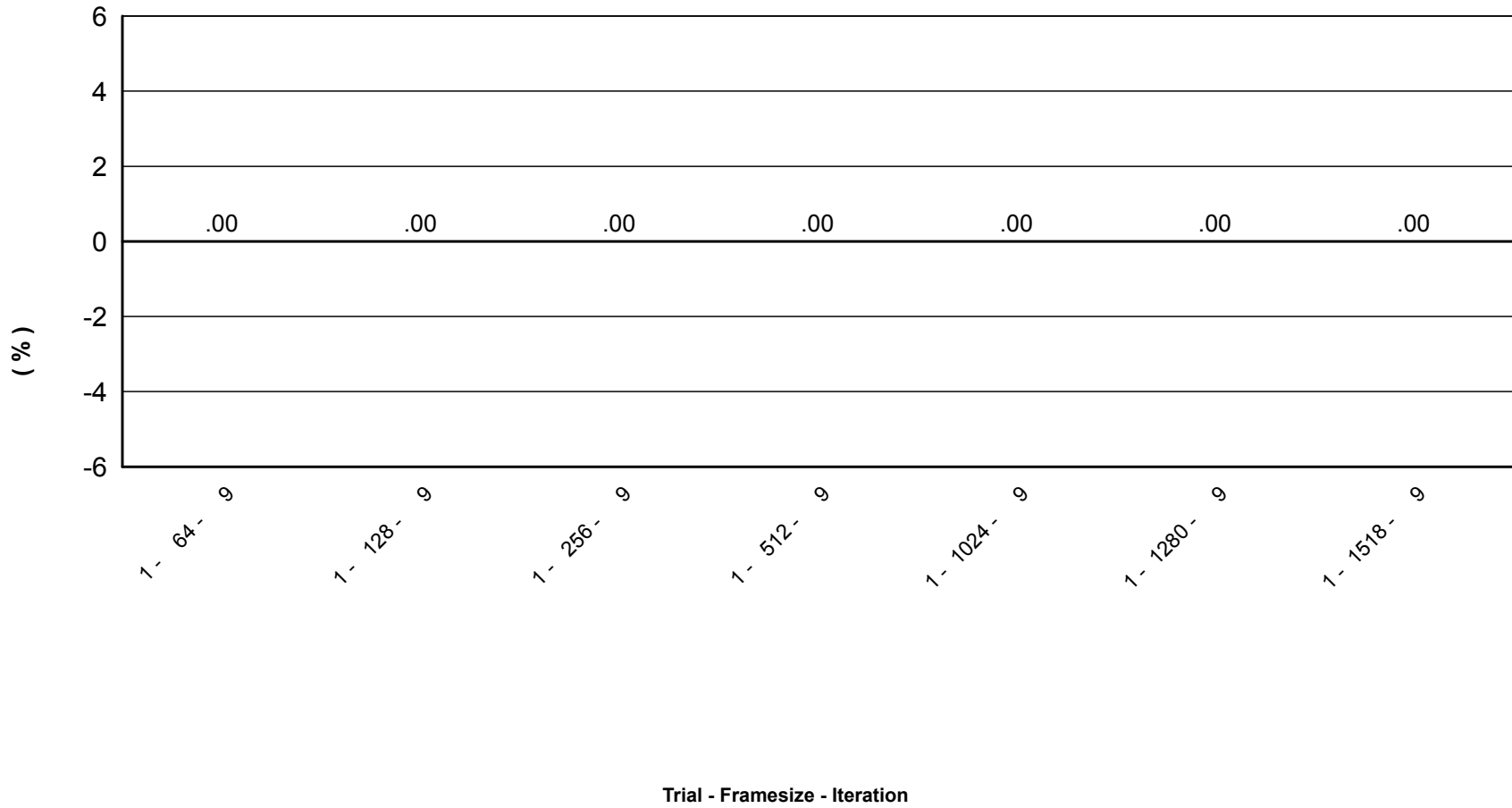
RFC2544 - Throughput/Latency - Aggregated Graph

Tx / Rx Frames per Frame Size



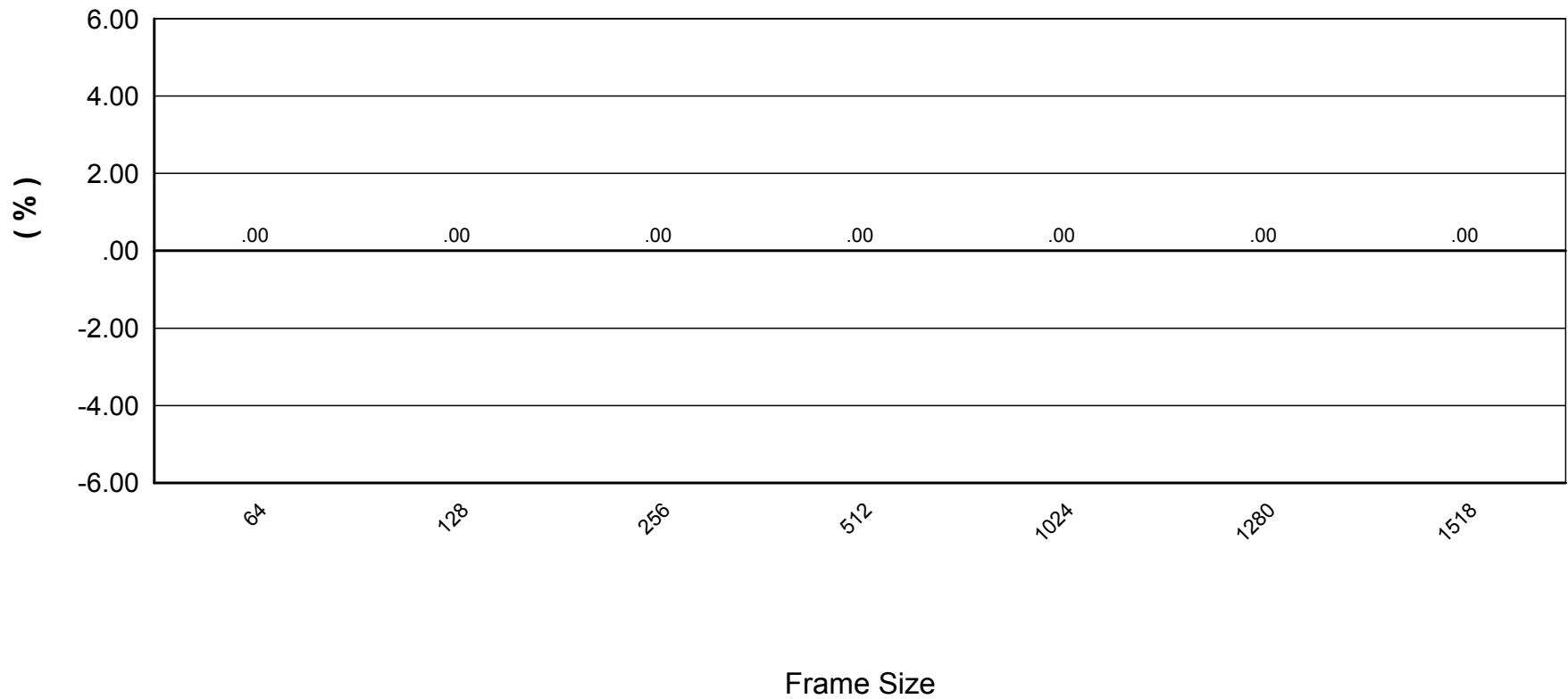
RFC2544 - Throughput/Latency - Aggregated Graph

Aggregated Frame Loss



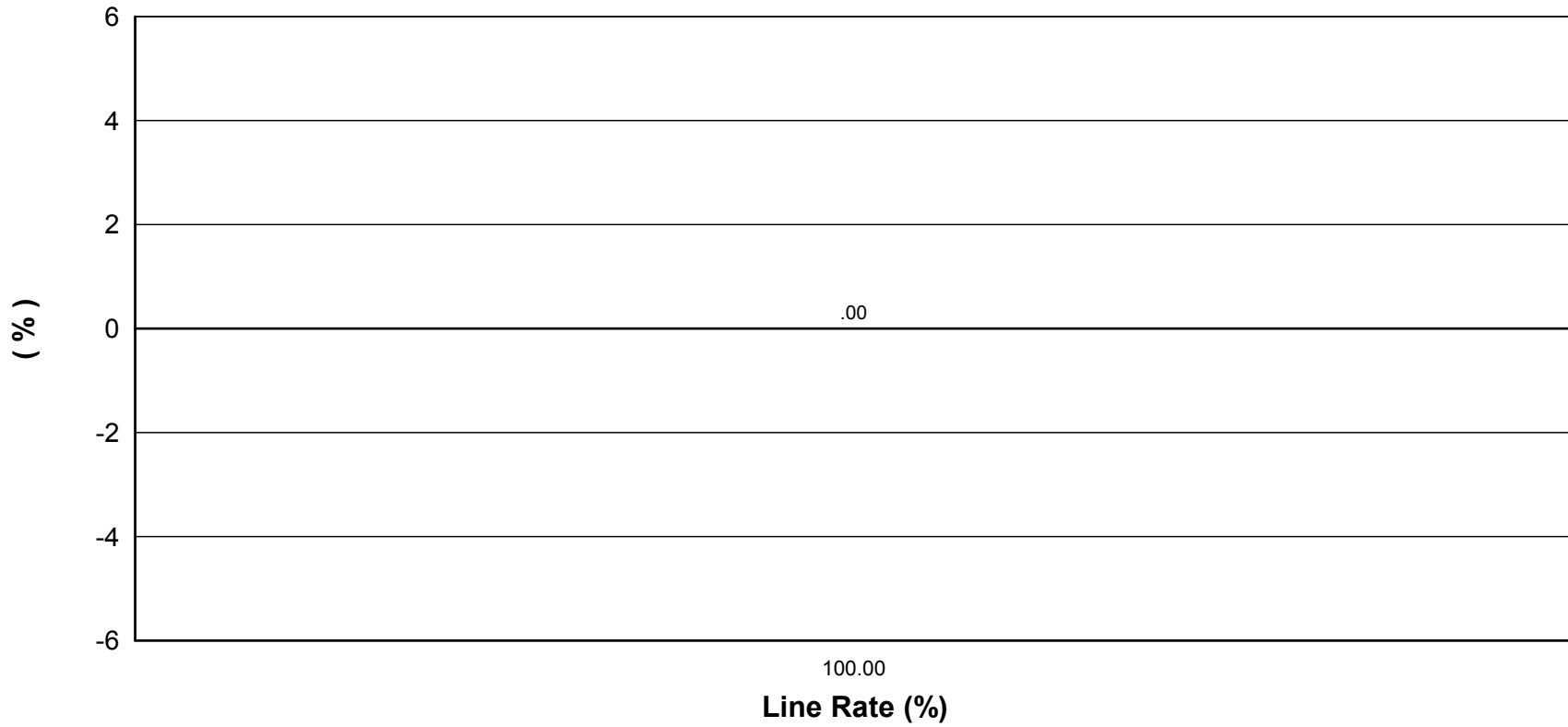
RFC2544 - Throughput/Latency - Aggregated Graph

Aggregated Frame Loss per Frame Size



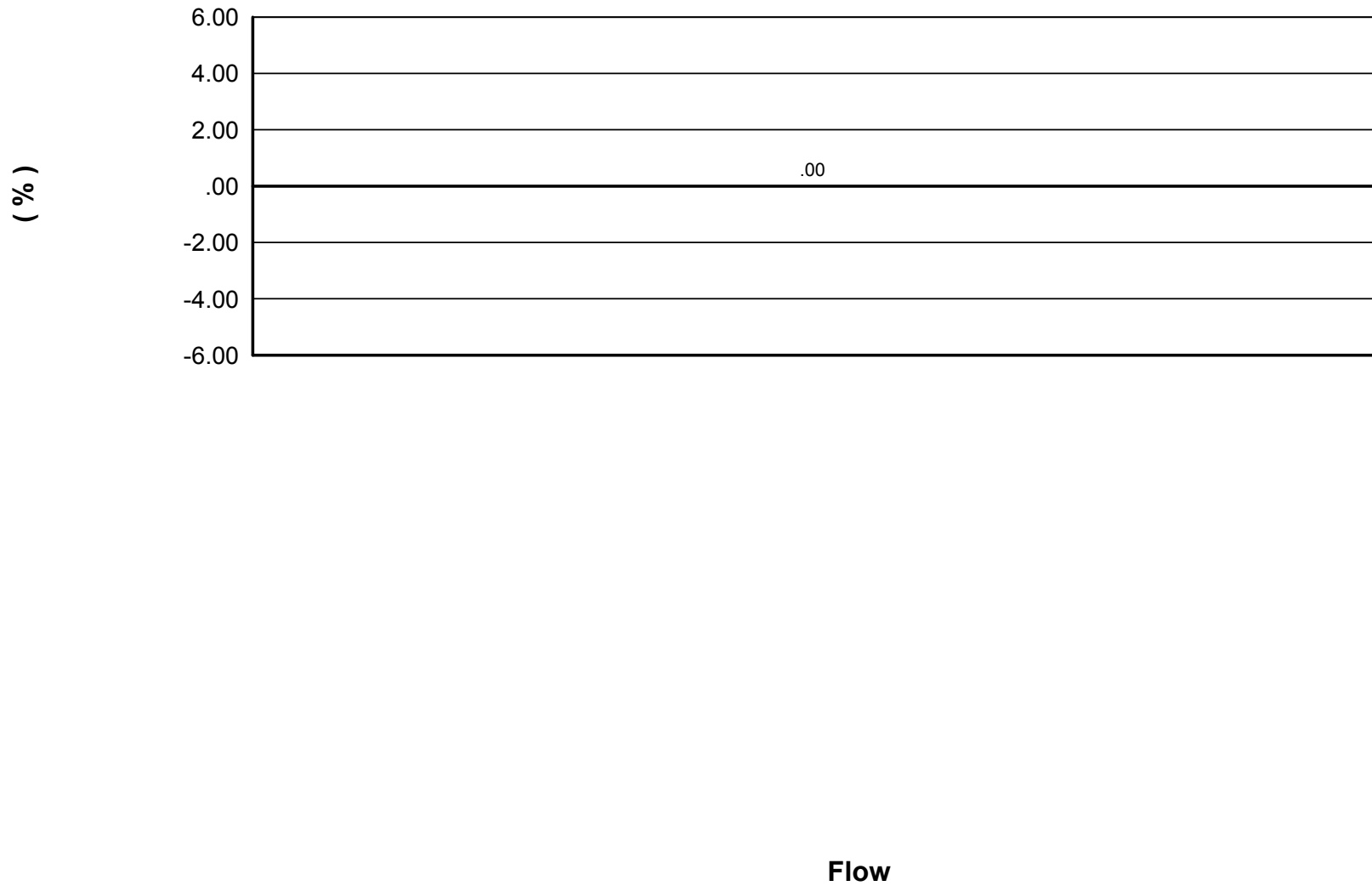
RFC2544 - Throughput/Latency - Aggregated Graph

Aggregated Frame Loss per Line Rate



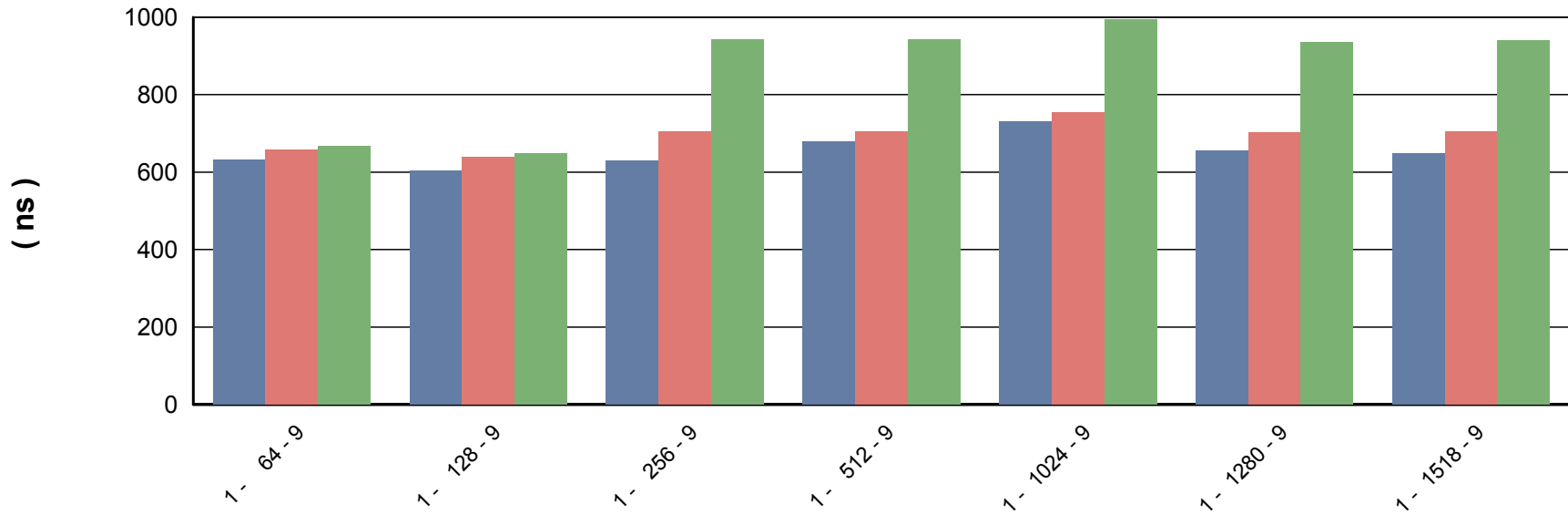
RFC2544 - Throughput/Latency - Per Flow Graph

Average Frame Loss per Flow



RFC2544 - Throughput/Latency - Aggregated Graph

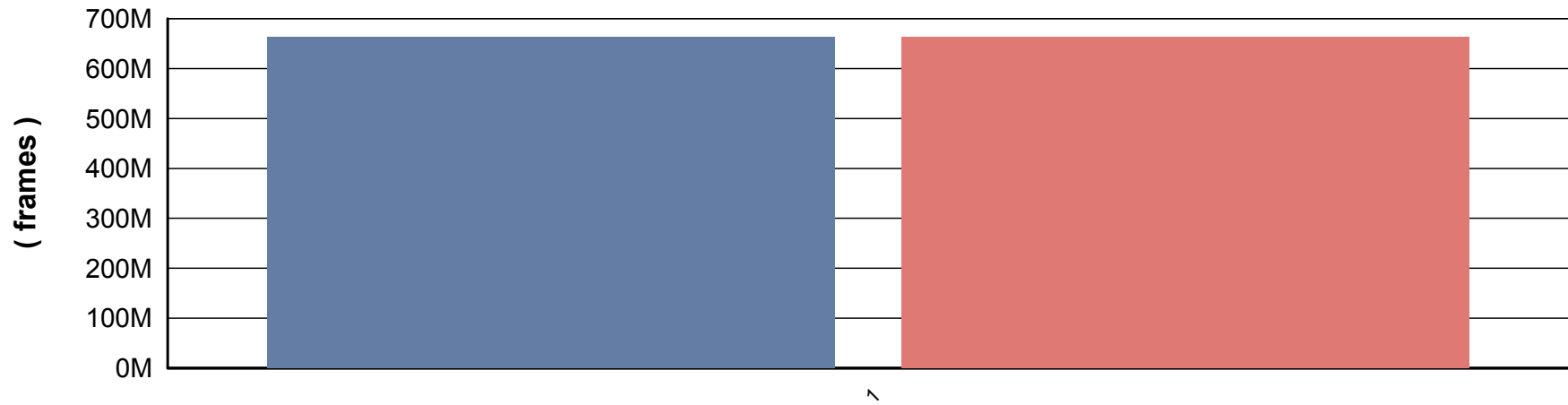
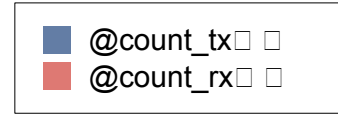
Aggregated Latency



Trial - Framesize - Iteration

RFC2544 - Throughput/Latency - Per Flow Graph

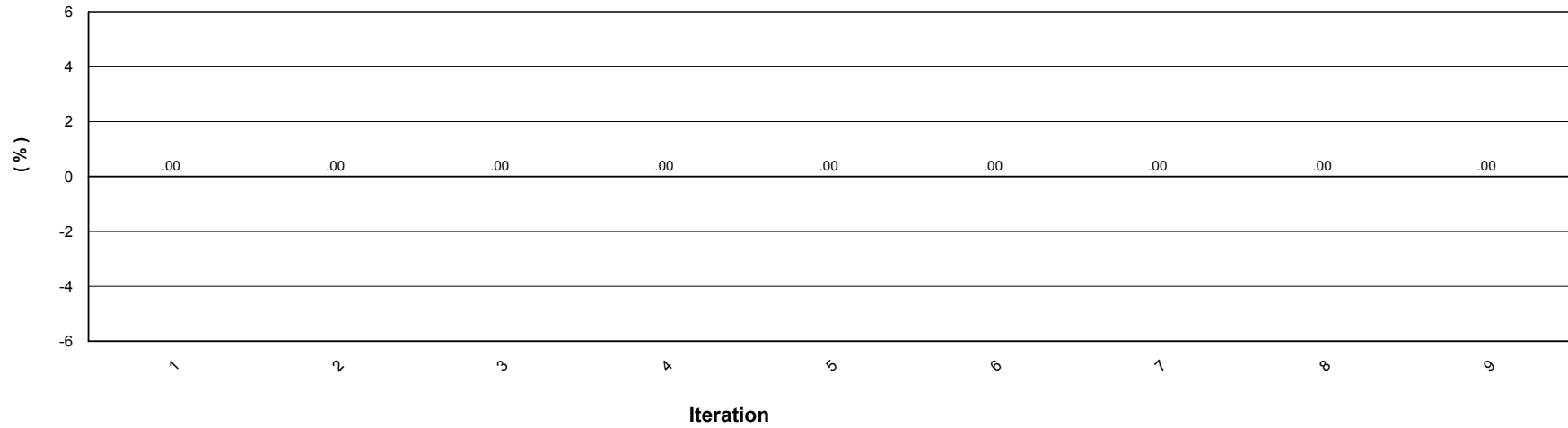
Tx / Rx Frame Count



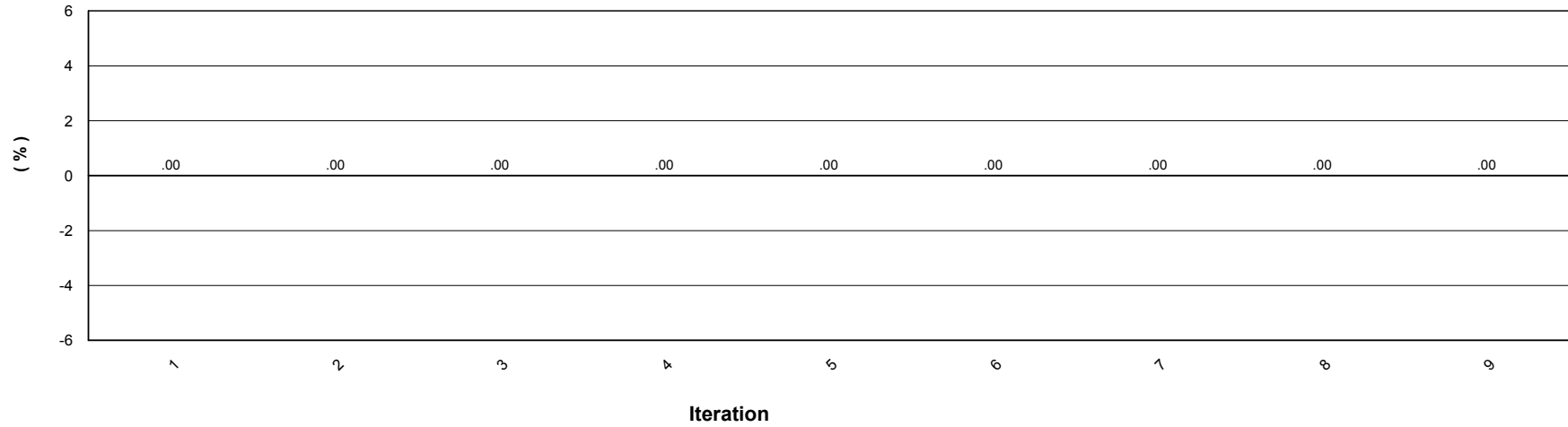
Trial

RFC2544 - Throughput/Latency - Iteration Graph

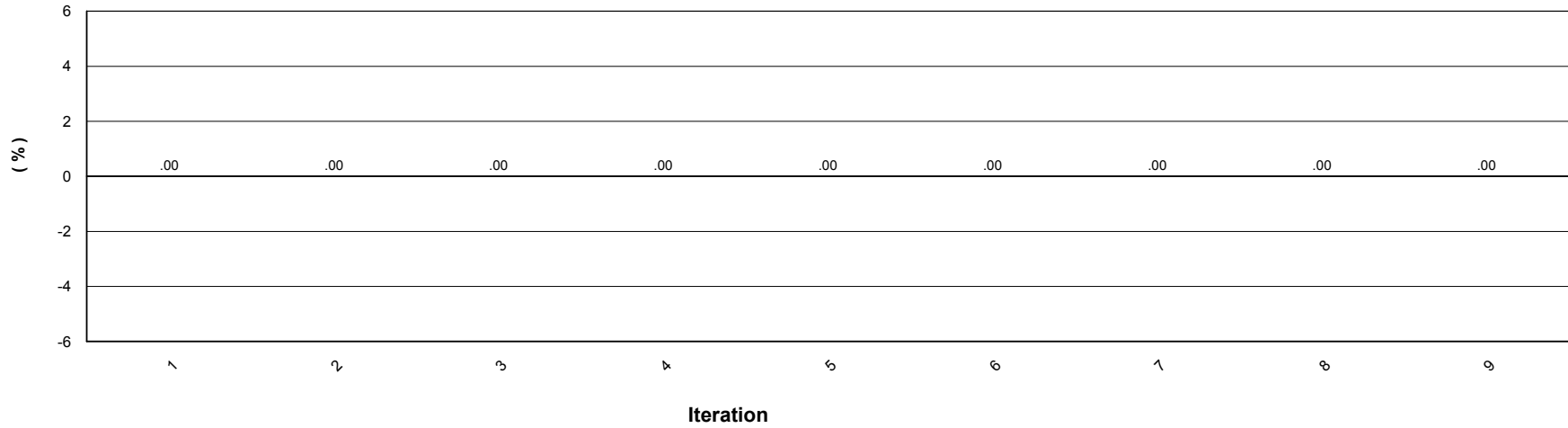
Aggregated Frame Loss for Trial 1 and Framesize 64



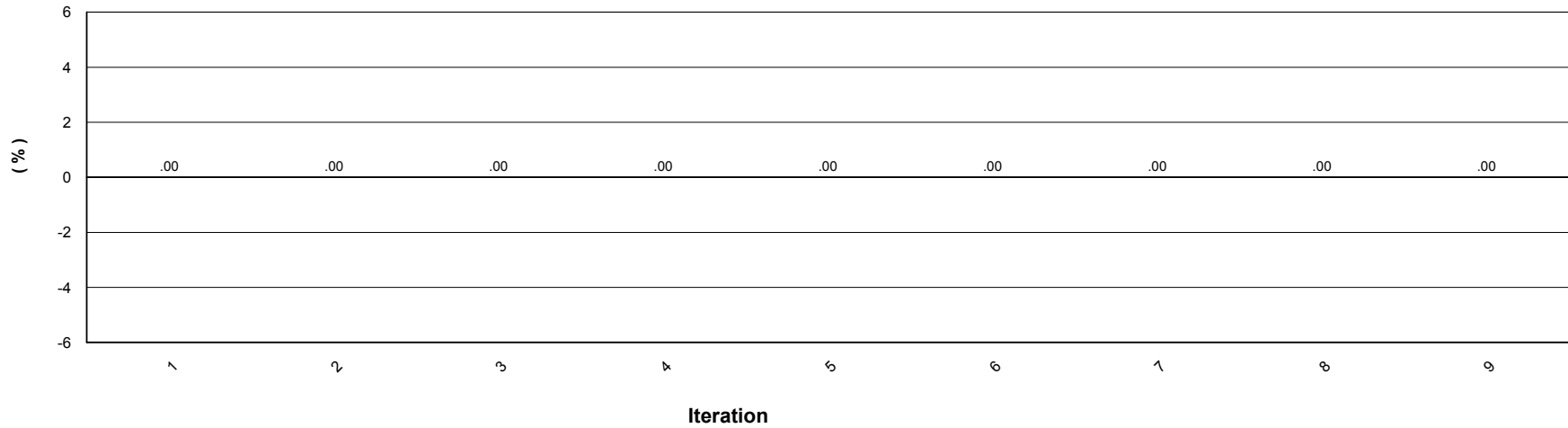
Aggregated Frame Loss for Trial 1 and Framesize 128



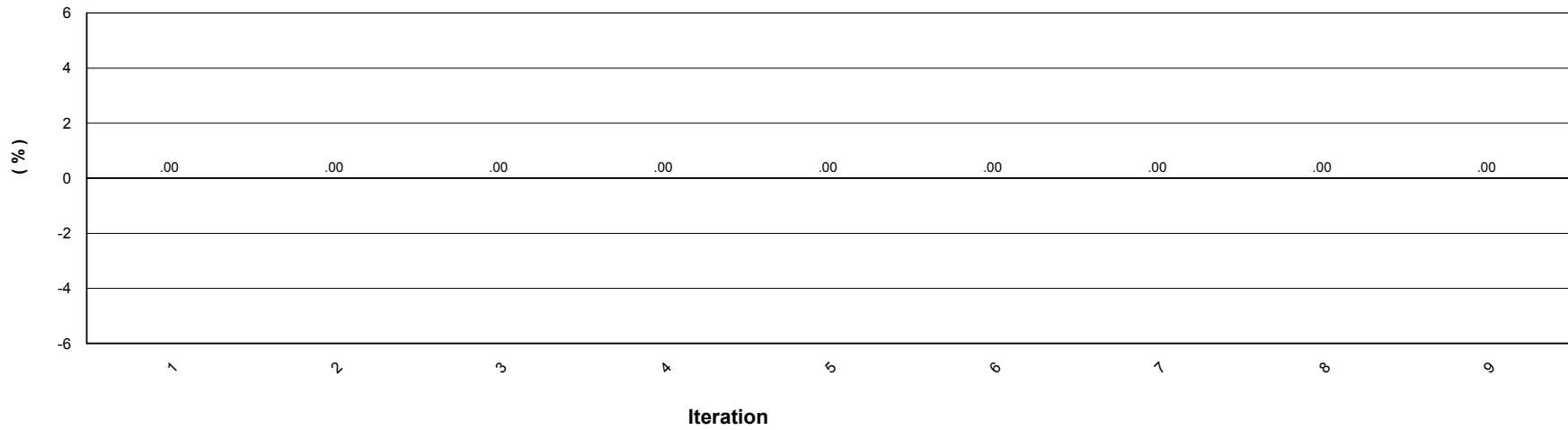
Aggregated Frame Loss for Trial 1 and Framesize 256



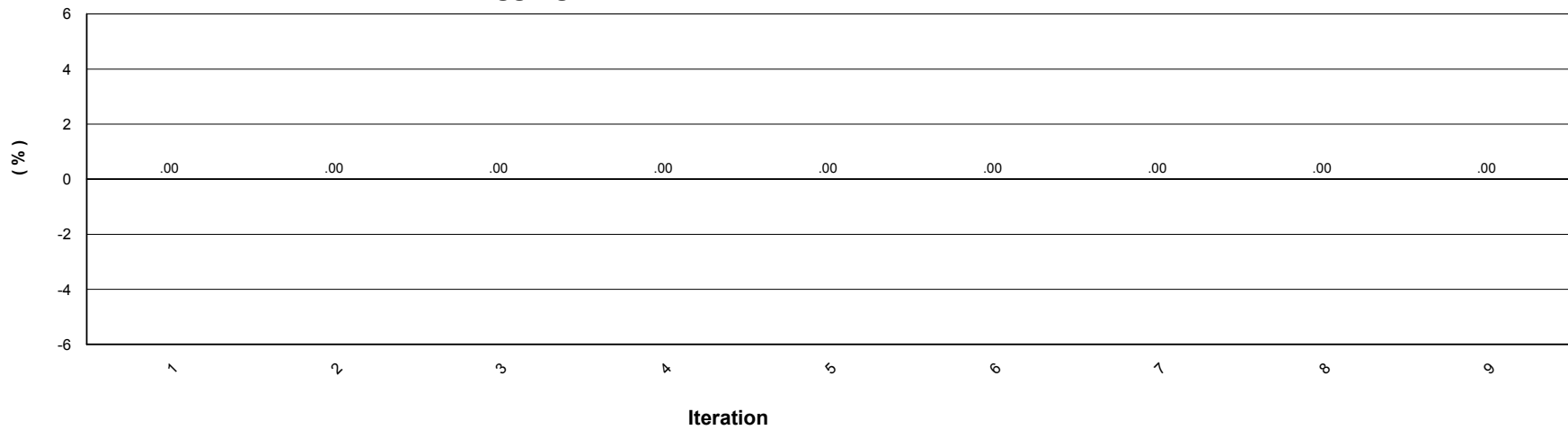
Aggregated Frame Loss for Trial 1 and Framesize 512



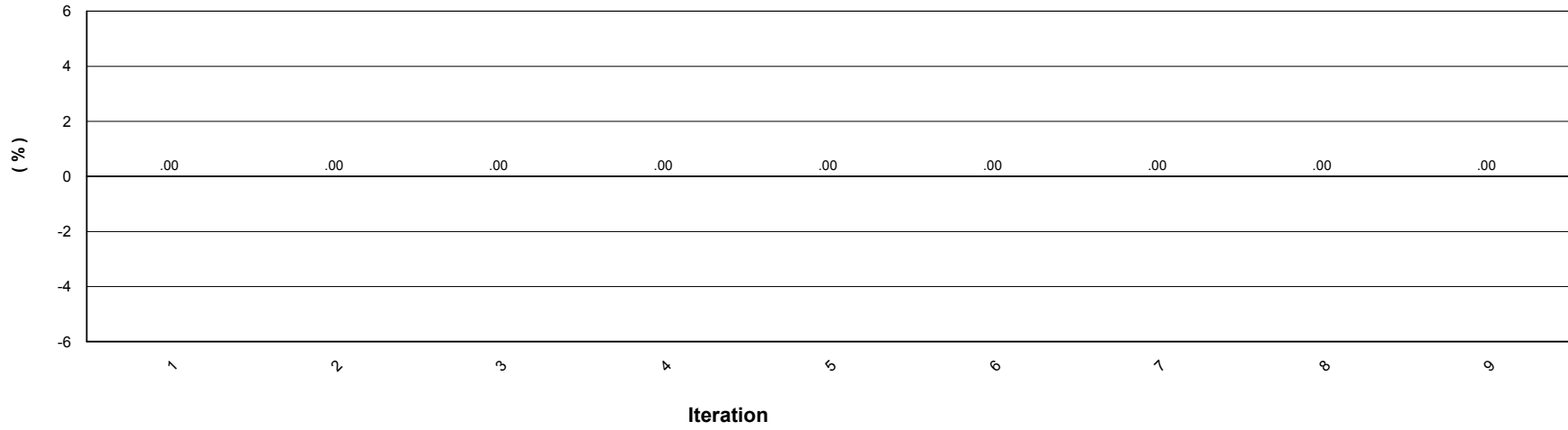
Aggregated Frame Loss for Trial 1 and Framesize 1024



Aggregated Frame Loss for Trial 1 and Framesize 1280

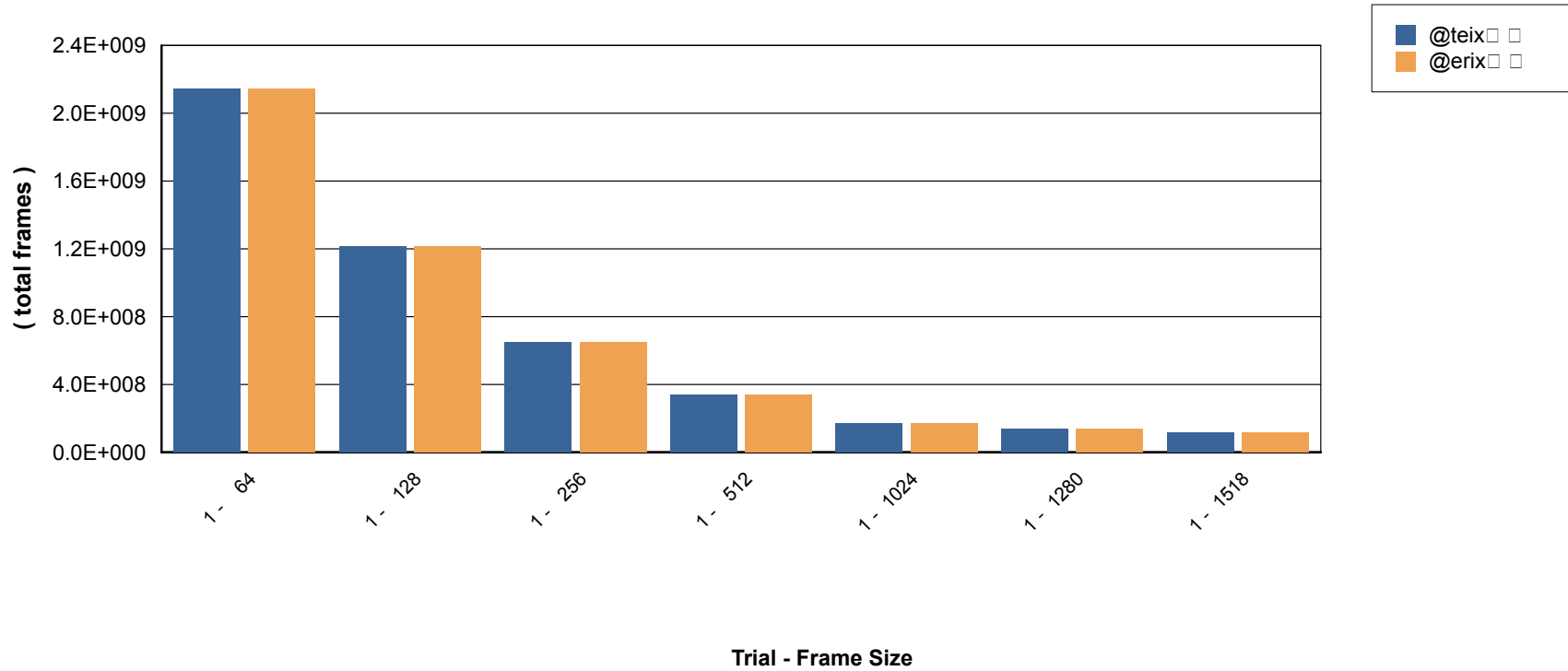


Aggregated Frame Loss for Trial 1 and Framesize 1518

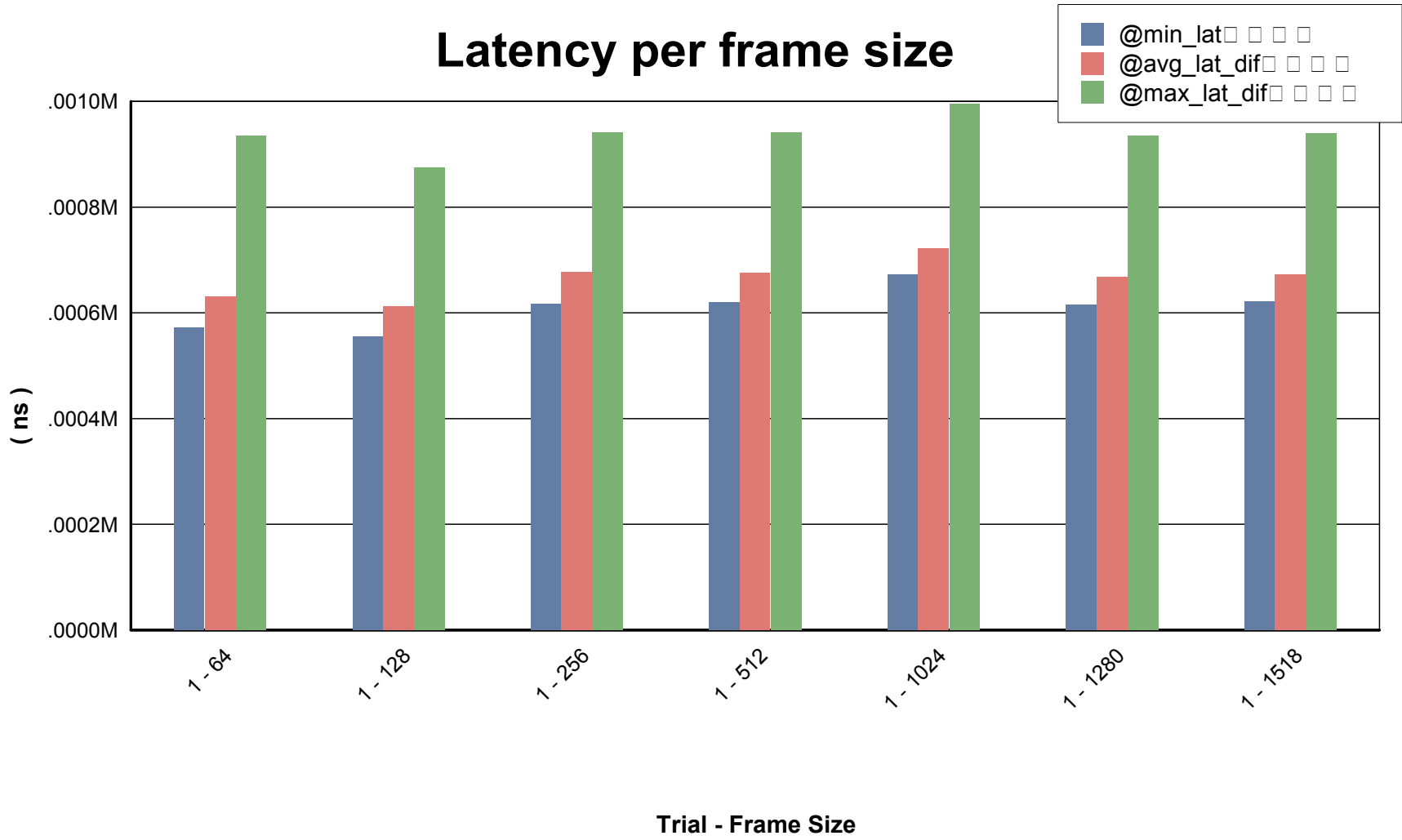


RFC2544 - Throughput/Latency - Iteration Graph

Tx / Rx Frames per Frame Size



RFC2544 - Throughput/Latency - Iteration Graph



RFC2544 - Throughput/Latency - Aggregated Results

Trial / Framesize / Iteration	Agg L2 Throughput				Agg L1 Throughput		Throughput (frames)	Agg Latency		
	Agg Tx Rate %	Agg Rx Rate			Tx Rate Mbps	Rx Rate Mbps		Min (ns)	Max (ns)	Average (ns)
		%	FPS	Mbps						
Trial: 1 / FS: 64 / Iter: 9	100.00	100	14880952.4	7619.048			Tx : 297619048.000 Rx : 297619048.000 Loss : 0 Loss% : .00	632	667	658.000
Trial: 1 / FS: 128 / Iter: 9	100.00	100	8445945.9	8648.649			Tx : 168918919.000 Rx : 168918919.000 Loss : 0 Loss% : .00	605	647	639.000
Trial: 1 / FS: 256 / Iter: 9	100.00	100	4528985.5	9275.362			Tx : 90579710.000 Rx : 90579710.000 Loss : 0 Loss% : .00	630	942	705.000
Trial: 1 / FS: 512 / Iter: 9	100.00	100	2349624.1	9624.060			Tx : 46992481.000 Rx : 46992481.000 Loss : 0 Loss% : .00	680	942	705.000
Trial: 1 / FS: 1024 / Iter: 9	100.00	100	1197318.0	9808.429			Tx : 23946360.000 Rx : 23946360.000 Loss : 0 Loss% : .00	732	995	754.000
Trial: 1 / FS: 1280 / Iter: 9	100.00	100	961538.5	9846.154			Tx : 19230769.000 Rx : 19230769.000 Loss : 0 Loss% : .00	655	935	702.000
Trial: 1 / FS: 1518 / Iter: 9	100.00	100	812743.8	9869.961			Tx : 16254876.000 Rx : 16254876.000 Loss : 0 Loss% : .00	647	940	705.000

RFC2544 - Throughput/Latency - Aggregated Results

Trial / Framesize / Iteration	Agg L2 Throughput				Agg L1 Throughput		Throughput (frames)	Agg Latency		
	Agg Tx Rate %	Agg Rx Rate			Tx Rate Mbps	Rx Rate Mbps		Min (ns)	Max (ns)	Average (ns)
		%	FPS	Mbps						
Trial: 1 / FS: 64 / Iter: 1	10	10	1488095.2	761.905			Tx : 29761905.000 Rx : 29761905.000 Loss : 0 Loss% : .00	572	785	616.000
Trial: 1 / FS: 64 / Iter: 2	55	55	8184561.9	4190.496			Tx : 163690476.000 Rx : 163690476.000 Loss : 0 Loss% : .00	575	892	617.000
Trial: 1 / FS: 64 / Iter: 3	78	78	11532778.3	5904.783			Tx : 230654762.000 Rx : 230654762.000 Loss : 0 Loss% : .00	577	920	619.000
Trial: 1 / FS: 64 / Iter: 4	89	89	13206904.7	6761.935			Tx : 264136905.000 Rx : 264136905.000 Loss : 0 Loss% : .00	585	875	622.000
Trial: 1 / FS: 64 / Iter: 5	94	94	14044019.2	7190.538			Tx : 280877976.000 Rx : 280877976.000 Loss : 0 Loss% : .00	590	915	627.000
Trial: 1 / FS: 64 / Iter: 6	97	97	14462459.8	7404.779			Tx : 289248512.000 Rx : 289248512.000 Loss : 0 Loss% : .00	605	935	634.000
Trial: 1 / FS: 64 / Iter: 7	99	99	14671832.4	7511.978			Tx : 293433780.000 Rx : 293433780.000 Loss : 0 Loss% : .00	600	665	640.000
Trial: 1 / FS: 64 / Iter: 8	99	99	14776334.7	7565.483			Tx : 295526414.000 Rx : 295526414.000 Loss : 0 Loss% : .00	590	665	645.000
Trial: 1 / FS: 64 / Iter: 9	100	100	14880952.4	7619.048			Tx : 297619048.000 Rx : 297619048.000 Loss : 0 Loss% : .00	632	667	658.000
Trial: 1 / FS: 128 / Iter: 1	10	10	844594.6	864.865			Tx : 16891892.000 Rx : 16891892.000 Loss : 0 Loss% : .00	555	637	599.000
Trial: 1 / FS: 128 / Iter: 2	55	55	4645271.8	4756.758			Tx : 92905405.000 Rx : 92905405.000 Loss : 0 Loss% : .00	555	782	599.000
Trial: 1 / FS: 128 / Iter: 3	78	78	6545640.5	6702.736			Tx : 130912162.000 Rx : 130912162.000 Loss : 0 Loss% : .00	555	817	599.000
Trial: 1 / FS: 128 / Iter: 4	89	89	7495812.9	7675.712			Tx : 149915541.000 Rx : 149915541.000 Loss : 0 Loss% : .00	555	875	599.000

Trial: 1 / FS: 128 / Iter: 5	94	94	7970906.2	8162.208	Tx : Rx : Loss : Loss% :	159417230.000 159417230.000 0 .00	572	835	610.000
Trial: 1 / FS: 128 / Iter: 6	97	97	8208443.1	8405.446	Tx : Rx : Loss : Loss% :	164168074.000 164168074.000 0 .00	577	845	618.000
Trial: 1 / FS: 128 / Iter: 7	99	99	8327207.2	8527.060	Tx : Rx : Loss : Loss% :	166543497.000 166543497.000 0 .00	600	857	623.000
Trial: 1 / FS: 128 / Iter: 8	99	99	8386568.4	8587.846	Tx : Rx : Loss : Loss% :	167731208.000 167731208.000 0 .00	577	647	627.000
Trial: 1 / FS: 128 / Iter: 9	100	100	8445945.9	8648.649	Tx : Rx : Loss : Loss% :	168918919.000 168918919.000 0 .00	605	647	639.000
Trial: 1 / FS: 256 / Iter: 1	10	10	452898.6	927.536	Tx : Rx : Loss : Loss% :	9057971.000 9057971.000 0 .00	617	705	664.000
Trial: 1 / FS: 256 / Iter: 2	55	55	2490946.0	5101.457	Tx : Rx : Loss : Loss% :	49818841.000 49818841.000 0 .00	617	707	664.000
Trial: 1 / FS: 256 / Iter: 3	78	78	3509965.0	7188.408	Tx : Rx : Loss : Loss% :	70199275.000 70199275.000 0 .00	617	832	664.000
Trial: 1 / FS: 256 / Iter: 4	89	89	4019481.9	8231.899	Tx : Rx : Loss : Loss% :	80389493.000 80389493.000 0 .00	635	935	669.000
Trial: 1 / FS: 256 / Iter: 5	94	94	4274232.0	8753.627	Tx : Rx : Loss : Loss% :	85484601.000 85484601.000 0 .00	625	877	675.000
Trial: 1 / FS: 256 / Iter: 6	97	97	4401620.3	9014.518	Tx : Rx : Loss : Loss% :	88032156.000 88032156.000 0 .00	652	902	679.000
Trial: 1 / FS: 256 / Iter: 7	99	99	4465298.0	9144.930	Tx : Rx : Loss : Loss% :	89305933.000 89305933.000 0 .00	665	905	685.000
Trial: 1 / FS: 256 / Iter: 8	99	99	4497145.4	9210.154	Tx : Rx : Loss : Loss% :	89942822.000 89942822.000 0 .00	657	920	689.000
Trial: 1 / FS: 256 / Iter: 9	100	100	4528985.5	9275.362	Tx : Rx : Loss : Loss% :	90579710.000 90579710.000 0 .00	630	942	705.000
Trial: 1 / FS: 512 / Iter: 1	10	10	234962.4	962.406	Tx : Rx : Loss : Loss% :	4699248.000 4699248.000 0 .00	622	707	666.000

Trial: 1 / FS: 512 / Iter: 2	55	55	1292293.6	5293.235	Tx : 25845865.000	620	707	666.000
					Rx : 25845865.000			
					Loss : 0			
					Loss% : .00			
Trial: 1 / FS: 512 / Iter: 3	78	78	1820959.8	7458.651	Tx : 36419173.000	620	707	666.000
					Rx : 36419173.000			
					Loss : 0			
					Loss% : .00			
Trial: 1 / FS: 512 / Iter: 4	89	89	2085291.7	8541.355	Tx : 41705827.000	620	837	666.000
					Rx : 41705827.000			
					Loss : 0			
					Loss% : .00			
Trial: 1 / FS: 512 / Iter: 5	94	94	2217460.1	9082.716	Tx : 44349154.000	632	877	670.000
					Rx : 44349154.000			
					Loss : 0			
					Loss% : .00			
Trial: 1 / FS: 512 / Iter: 6	97	97	2283540.8	9353.383	Tx : 45670818.000	645	900	677.000
					Rx : 45670818.000			
					Loss : 0			
					Loss% : .00			
Trial: 1 / FS: 512 / Iter: 7	99	99	2316582.8	9488.723	Tx : 46331649.000	652	900	681.000
					Rx : 46331649.000			
					Loss : 0			
					Loss% : .00			
Trial: 1 / FS: 512 / Iter: 8	99	99	2333105.5	9556.400	Tx : 46662065.000	635	915	685.000
					Rx : 46662065.000			
					Loss : 0			
					Loss% : .00			
Trial: 1 / FS: 512 / Iter: 9	100	100	2349624.1	9624.060	Tx : 46992481.000	680	942	705.000
					Rx : 46992481.000			
					Loss : 0			
					Loss% : .00			
Trial: 1 / FS: 1024 / Iter: 1	10	10	119731.8	980.843	Tx : 2394636.000	672	755	716.000
					Rx : 2394636.000			
					Loss : 0			
					Loss% : .00			
Trial: 1 / FS: 1024 / Iter: 2	55	55	658525.0	5394.637	Tx : 13170498.000	672	755	716.000
					Rx : 13170498.000			
					Loss : 0			
					Loss% : .00			
Trial: 1 / FS: 1024 / Iter: 3	78	78	927921.5	7601.533	Tx : 18558429.000	672	755	716.000
					Rx : 18558429.000			
					Loss : 0			
					Loss% : .00			
Trial: 1 / FS: 1024 / Iter: 4	89	89	1062619.9	8704.982	Tx : 21252395.000	672	755	716.000
					Rx : 21252395.000			
					Loss : 0			
					Loss% : .00			
Trial: 1 / FS: 1024 / Iter: 5	94	94	1129969.4	9256.710	Tx : 22599377.000	672	755	716.000
					Rx : 22599377.000			
					Loss : 0			
					Loss% : .00			
Trial: 1 / FS: 1024 / Iter: 6	97	97	1163643.8	9532.570	Tx : 23272869.000	672	962	716.000
					Rx : 23272869.000			
					Loss : 0			
					Loss% : .00			
Trial: 1 / FS: 1024 / Iter: 7	99	99	1180480.8	9670.498	Tx : 23609614.000	677	962	721.000
					Rx : 23609614.000			
					Loss : 0			
					Loss% : .00			

Trial: 1 / FS: 1024 / Iter: 8	99	99	1188899.4	9739.464	Tx : 23777987.000	700	957	731.000
					Rx : 23777987.000			
					Loss : 0			
					Loss% : .00			
Trial: 1 / FS: 1024 / Iter: 9	100	100	1197318.0	9808.429	Tx : 23946360.000	732	995	754.000
					Rx : 23946360.000			
					Loss : 0			
					Loss% : .00			
Trial: 1 / FS: 1280 / Iter: 1	10	10	96153.8	984.615	Tx : 1923077.000	617	705	664.000
					Rx : 1923077.000			
					Loss : 0			
					Loss% : .00			
Trial: 1 / FS: 1280 / Iter: 2	55	55	528846.3	5415.386	Tx : 10576923.000	617	705	663.000
					Rx : 10576923.000			
					Loss : 0			
					Loss% : .00			
Trial: 1 / FS: 1280 / Iter: 3	78	78	745192.5	7630.771	Tx : 14903846.000	617	705	663.000
					Rx : 14903846.000			
					Loss : 0			
					Loss% : .00			
Trial: 1 / FS: 1280 / Iter: 4	89	89	853365.8	8738.465	Tx : 17067308.000	615	705	663.000
					Rx : 17067308.000			
					Loss : 0			
					Loss% : .00			
Trial: 1 / FS: 1280 / Iter: 5	94	94	907452.0	9292.308	Tx : 18149038.000	620	705	663.000
					Rx : 18149038.000			
					Loss : 0			
					Loss% : .00			
Trial: 1 / FS: 1280 / Iter: 6	97	97	934495.5	9569.234	Tx : 18689904.000	620	705	663.000
					Rx : 18689904.000			
					Loss : 0			
					Loss% : .00			
Trial: 1 / FS: 1280 / Iter: 7	99	99	948016.8	9707.692	Tx : 18960337.000	620	865	663.000
					Rx : 18960337.000			
					Loss : 0			
					Loss% : .00			
Trial: 1 / FS: 1280 / Iter: 8	99	99	954777.8	9776.925	Tx : 19095553.000	620	880	664.000
					Rx : 19095553.000			
					Loss : 0			
					Loss% : .00			
Trial: 1 / FS: 1280 / Iter: 9	100	100	961538.5	9846.154	Tx : 19230769.000	655	935	702.000
					Rx : 19230769.000			
					Loss : 0			
					Loss% : .00			
Trial: 1 / FS: 1518 / Iter: 1	10	10	81274.4	986.996	Tx : 1625488.000	622	707	667.000
					Rx : 1625488.000			
					Loss : 0			
					Loss% : .00			
Trial: 1 / FS: 1518 / Iter: 2	55	55	447009.2	5428.479	Tx : 8940182.000	622	707	668.000
					Rx : 8940182.000			
					Loss : 0			
					Loss% : .00			
Trial: 1 / FS: 1518 / Iter: 3	78	78	629876.6	7649.222	Tx : 12597529.000	622	707	668.000
					Rx : 12597529.000			
					Loss : 0			
					Loss% : .00			
Trial: 1 / FS: 1518 / Iter: 4	89	89	721310.4	8759.594	Tx : 14426203.000	622	890	668.000
					Rx : 14426203.000			
					Loss : 0			
					Loss% : .00			

Trial: 1 / FS: 1518 / Iter: 5	94	94	767027.4	9314.781	Tx :	15340540.000	622	707	668.000
					Rx :	15340540.000			
					Loss :	0			
					Loss% :	.00			
Trial: 1 / FS: 1518 / Iter: 6	97	97	789885.5	9592.370	Tx :	15797708.000	622	707	668.000
					Rx :	15797708.000			
					Loss :	0			
					Loss% :	.00			
Trial: 1 / FS: 1518 / Iter: 7	99	99	801314.7	9731.165	Tx :	16026292.000	622	707	668.000
					Rx :	16026292.000			
					Loss :	0			
					Loss% :	.00			
Trial: 1 / FS: 1518 / Iter: 8	99	99	807029.2	9800.563	Tx :	16140584.000	632	707	673.000
					Rx :	16140584.000			
					Loss :	0			
					Loss% :	.00			
Trial: 1 / FS: 1518 / Iter: 9	100	100	812743.8	9869.961	Tx :	16254876.000	647	940	705.000
					Rx :	16254876.000			
					Loss :	0			
					Loss% :	.00			

RFC2544 - Throughput/Latency - Per Flow Statistics - Part 1 of 2

Trial / Framesize / Iteration	Tx Port	Rx Port	Flow Group	L2 Throughput				L1 Throughput		Throughput (frames)
				Tx Rate %	Rx Rate			Tx Rate Mbps	Rx Rate Mbps	
					%	FPS	Mbps			
Trial: 1 / FS: 64 / Iter: 9	Ethernet - 001	Ethernet - 002	S4600-24X2C-Endpoint Set-1 - Flow Group 0001	100.00	100	14880952.4	7619.05			Tx : 297619048 Rx : 297619048 Loss : 0 Loss% : 0.000
Trial: 1 / FS: 128 / Iter: 9	Ethernet - 001	Ethernet - 002	S4600-24X2C-Endpoint Set-1 - Flow Group 0001	100.00	100	8445945.9	8648.65			Tx : 168918919 Rx : 168918919 Loss : 0 Loss% : 0.000
Trial: 1 / FS: 256 / Iter: 9	Ethernet - 001	Ethernet - 002	S4600-24X2C-Endpoint Set-1 - Flow Group 0001	100.00	100	4528985.5	9275.36			Tx : 90579710 Rx : 90579710 Loss : 0 Loss% : 0.000
Trial: 1 / FS: 512 / Iter: 9	Ethernet - 001	Ethernet - 002	S4600-24X2C-Endpoint Set-1 - Flow Group 0001	100.00	100	2349624.1	9624.06			Tx : 46992481 Rx : 46992481 Loss : 0 Loss% : 0.000
Trial: 1 / FS: 1024 / Iter: 9	Ethernet - 001	Ethernet - 002	S4600-24X2C-Endpoint Set-1 - Flow Group 0001	100.00	100	1197318.0	9808.43			Tx : 23946360 Rx : 23946360 Loss : 0 Loss% : 0.000
Trial: 1 / FS: 1280 / Iter: 9	Ethernet - 001	Ethernet - 002	S4600-24X2C-Endpoint Set-1 - Flow Group 0001	100.00	100	961538.5	9846.15			Tx : 19230769 Rx : 19230769 Loss : 0 Loss% : 0.000
Trial: 1 / FS: 1518 / Iter: 9	Ethernet - 001	Ethernet - 002	S4600-24X2C-Endpoint Set-1 - Flow Group 0001	100.00	100	812743.8	9869.96			Tx : 16254876 Rx : 16254876 Loss : 0 Loss% : 0.000

RFC2544 - Throughput/Latency - Per Flow Statistics - Part 2 of 2

Trial / Framesize / Iteration	Tx Port	Rx Port	Flow Group	Min Latency (ns)	Max Latency (ns)	Avg Latency (ns)
Trial: 1 / FS: 64 / Iter: 9	Ethernet - 001	Ethernet - 002	S4600-24X2C-Endpoint Set-1 - Flow Group 0001	632	667	658
Trial: 1 / FS: 128 / Iter: 9	Ethernet - 001	Ethernet - 002	S4600-24X2C-Endpoint Set-1 - Flow Group 0001	605	647	639
Trial: 1 / FS: 256 / Iter: 9	Ethernet - 001	Ethernet - 002	S4600-24X2C-Endpoint Set-1 - Flow Group 0001	630	942	705
Trial: 1 / FS: 512 / Iter: 9	Ethernet - 001	Ethernet - 002	S4600-24X2C-Endpoint Set-1 - Flow Group 0001	680	942	705
Trial: 1 / FS: 1024 / Iter: 9	Ethernet - 001	Ethernet - 002	S4600-24X2C-Endpoint Set-1 - Flow Group 0001	732	995	754
Trial: 1 / FS: 1280 / Iter: 9	Ethernet - 001	Ethernet - 002	S4600-24X2C-Endpoint Set-1 - Flow Group 0001	655	935	702
Trial: 1 / FS: 1518 / Iter: 9	Ethernet - 001	Ethernet - 002	S4600-24X2C-Endpoint Set-1 - Flow Group 0001	647	940	705

RFC2544 - Throughput/Latency - Iteration Statistics - Part 1 of 2

Trial / Framesize / Iteration	Tx Port	Rx Port	Flow Group	L2 Throughput				L1 Throughput		Throughput (frames)	
				Tx Rate %	Rx Rate			Tx Rate Mbps	Rx Rate Mbps	Tx	Rx
					%	FPS	Mbps				
Trial: 1 / FS: 64 / Iter: 1	Ethernet - 001	Ethernet - 002	S4600-24X2C-Endpoint Set-1 - Flow Group 0001	10.00	10.00	1488095.2	761.91			Tx : 29761905 Rx : 29761905 Loss : 0 Loss% : 0.000	
Trial: 1 / FS: 64 / Iter: 2	Ethernet - 001	Ethernet - 002	S4600-24X2C-Endpoint Set-1 - Flow Group 0001	55.00	55.00	8184561.9	4190.50			Tx : 163690476 Rx : 163690476 Loss : 0 Loss% : 0.000	
Trial: 1 / FS: 64 / Iter: 3	Ethernet - 001	Ethernet - 002	S4600-24X2C-Endpoint Set-1 - Flow Group 0001	77.50	77.50	11532778.3	5904.78			Tx : 230654762 Rx : 230654762 Loss : 0 Loss% : 0.000	
Trial: 1 / FS: 64 / Iter: 4	Ethernet - 001	Ethernet - 002	S4600-24X2C-Endpoint Set-1 - Flow Group 0001	88.75	88.75	13206904.7	6761.94			Tx : 264136905 Rx : 264136905 Loss : 0 Loss% : 0.000	
Trial: 1 / FS: 64 / Iter: 5	Ethernet - 001	Ethernet - 002	S4600-24X2C-Endpoint Set-1 - Flow Group 0001	94.38	94.38	14044019.2	7190.54			Tx : 280877976 Rx : 280877976 Loss : 0 Loss% : 0.000	
Trial: 1 / FS: 64 / Iter: 6	Ethernet - 001	Ethernet - 002	S4600-24X2C-Endpoint Set-1 - Flow Group 0001	97.19	97.19	14462459.8	7404.78			Tx : 289248512 Rx : 289248512 Loss : 0 Loss% : 0.000	
Trial: 1 / FS: 64 / Iter: 7	Ethernet - 001	Ethernet - 002	S4600-24X2C-Endpoint Set-1 - Flow Group 0001	98.59	98.59	14671832.4	7511.98			Tx : 293433780 Rx : 293433780 Loss : 0 Loss% : 0.000	
Trial: 1 / FS: 64 / Iter: 8	Ethernet - 001	Ethernet - 002	S4600-24X2C-Endpoint Set-1 - Flow Group 0001	99.30	99.30	14776334.7	7565.48			Tx : 295526414 Rx : 295526414 Loss : 0 Loss% : 0.000	
Trial: 1 / FS: 64 / Iter: 9	Ethernet - 001	Ethernet - 002	S4600-24X2C-Endpoint Set-1 - Flow Group 0001	100.00	100.00	14880952.4	7619.05			Tx : 297619048 Rx : 297619048 Loss : 0 Loss% : 0.000	
Trial: 1 / FS: 128 / Iter: 1	Ethernet - 001	Ethernet - 002	S4600-24X2C-Endpoint Set-1 - Flow Group 0001	10.00	10.00	844594.6	864.87			Tx : 16891892 Rx : 16891892 Loss : 0 Loss% : 0.000	
Trial: 1 / FS: 128 / Iter: 2	Ethernet - 001	Ethernet - 002	S4600-24X2C-Endpoint Set-1 - Flow Group 0001	55.00	55.00	4645271.8	4756.76			Tx : 92905405 Rx : 92905405 Loss : 0 Loss% : 0.000	
Trial: 1 / FS: 128 / Iter: 3	Ethernet - 001	Ethernet - 002	S4600-24X2C-Endpoint Set-1 - Flow Group 0001	77.50	77.50	6545640.5	6702.74			Tx : 130912162 Rx : 130912162 Loss : 0 Loss% : 0.000	
Trial: 1 / FS: 128 / Iter: 4	Ethernet - 001	Ethernet - 002	S4600-24X2C-Endpoint Set-1 - Flow Group 0001	88.75	88.75	7495812.9	7675.71			Tx : 149915541 Rx : 149915541 Loss : 0 Loss% : 0.000	

Trial: 1 / FS: 128 / Iter: 5	Ethernet - 001	Ethernet - 002	S4600-24X2C-Endpoint Set-1 - Flow Group 0001	94.38	94.38	7970906.2	8162.21	Tx : Rx : Loss : Loss% :	159417230 159417230 0 0.000
Trial: 1 / FS: 128 / Iter: 6	Ethernet - 001	Ethernet - 002	S4600-24X2C-Endpoint Set-1 - Flow Group 0001	97.19	97.19	8208443.1	8405.45	Tx : Rx : Loss : Loss% :	164168074 164168074 0 0.000
Trial: 1 / FS: 128 / Iter: 7	Ethernet - 001	Ethernet - 002	S4600-24X2C-Endpoint Set-1 - Flow Group 0001	98.59	98.59	8327207.2	8527.06	Tx : Rx : Loss : Loss% :	166543497 166543497 0 0.000
Trial: 1 / FS: 128 / Iter: 8	Ethernet - 001	Ethernet - 002	S4600-24X2C-Endpoint Set-1 - Flow Group 0001	99.30	99.30	8386568.4	8587.85	Tx : Rx : Loss : Loss% :	167731208 167731208 0 0.000
Trial: 1 / FS: 128 / Iter: 9	Ethernet - 001	Ethernet - 002	S4600-24X2C-Endpoint Set-1 - Flow Group 0001	100.00	100.00	8445945.9	8648.65	Tx : Rx : Loss : Loss% :	168918919 168918919 0 0.000
Trial: 1 / FS: 256 / Iter: 1	Ethernet - 001	Ethernet - 002	S4600-24X2C-Endpoint Set-1 - Flow Group 0001	10.00	10.00	452898.6	927.54	Tx : Rx : Loss : Loss% :	9057971 9057971 0 0.000
Trial: 1 / FS: 256 / Iter: 2	Ethernet - 001	Ethernet - 002	S4600-24X2C-Endpoint Set-1 - Flow Group 0001	55.00	55.00	2490946.0	5101.46	Tx : Rx : Loss : Loss% :	49818841 49818841 0 0.000
Trial: 1 / FS: 256 / Iter: 3	Ethernet - 001	Ethernet - 002	S4600-24X2C-Endpoint Set-1 - Flow Group 0001	77.50	77.50	3509965.0	7188.41	Tx : Rx : Loss : Loss% :	70199275 70199275 0 0.000
Trial: 1 / FS: 256 / Iter: 4	Ethernet - 001	Ethernet - 002	S4600-24X2C-Endpoint Set-1 - Flow Group 0001	88.75	88.75	4019481.9	8231.90	Tx : Rx : Loss : Loss% :	80389493 80389493 0 0.000
Trial: 1 / FS: 256 / Iter: 5	Ethernet - 001	Ethernet - 002	S4600-24X2C-Endpoint Set-1 - Flow Group 0001	94.38	94.38	4274232.0	8753.63	Tx : Rx : Loss : Loss% :	85484601 85484601 0 0.000
Trial: 1 / FS: 256 / Iter: 6	Ethernet - 001	Ethernet - 002	S4600-24X2C-Endpoint Set-1 - Flow Group 0001	97.19	97.19	4401620.3	9014.52	Tx : Rx : Loss : Loss% :	88032156 88032156 0 0.000
Trial: 1 / FS: 256 / Iter: 7	Ethernet - 001	Ethernet - 002	S4600-24X2C-Endpoint Set-1 - Flow Group 0001	98.59	98.59	4465298.0	9144.93	Tx : Rx : Loss : Loss% :	89305933 89305933 0 0.000
Trial: 1 / FS: 256 / Iter: 8	Ethernet - 001	Ethernet - 002	S4600-24X2C-Endpoint Set-1 - Flow Group 0001	99.30	99.30	4497145.4	9210.15	Tx : Rx : Loss : Loss% :	89942822 89942822 0 0.000
Trial: 1 / FS: 256 / Iter: 9	Ethernet - 001	Ethernet - 002	S4600-24X2C-Endpoint Set-1 - Flow Group 0001	100.00	100.00	4528985.5	9275.36	Tx : Rx : Loss : Loss% :	90579710 90579710 0 0.000
Trial: 1 / FS: 512 / Iter: 1	Ethernet - 001	Ethernet - 002	S4600-24X2C-Endpoint Set-1 - Flow Group 0001	10.00	10.00	234962.4	962.41	Tx : Rx : Loss : Loss% :	4699248 4699248 0 0.000

Trial: 1 / FS: 512 / Iter: 2	Ethernet - 001	Ethernet - 002	S4600-24X2C-Endpoint Set-1 - Flow Group 0001	55.00	55.00	1292293.6	5293.24	Tx : Rx : Loss : Loss% :	25845865 25845865 0 0.000
Trial: 1 / FS: 512 / Iter: 3	Ethernet - 001	Ethernet - 002	S4600-24X2C-Endpoint Set-1 - Flow Group 0001	77.50	77.50	1820959.8	7458.65	Tx : Rx : Loss : Loss% :	36419173 36419173 0 0.000
Trial: 1 / FS: 512 / Iter: 4	Ethernet - 001	Ethernet - 002	S4600-24X2C-Endpoint Set-1 - Flow Group 0001	88.75	88.75	2085291.7	8541.36	Tx : Rx : Loss : Loss% :	41705827 41705827 0 0.000
Trial: 1 / FS: 512 / Iter: 5	Ethernet - 001	Ethernet - 002	S4600-24X2C-Endpoint Set-1 - Flow Group 0001	94.38	94.38	2217460.1	9082.72	Tx : Rx : Loss : Loss% :	44349154 44349154 0 0.000
Trial: 1 / FS: 512 / Iter: 6	Ethernet - 001	Ethernet - 002	S4600-24X2C-Endpoint Set-1 - Flow Group 0001	97.19	97.19	2283540.8	9353.38	Tx : Rx : Loss : Loss% :	45670818 45670818 0 0.000
Trial: 1 / FS: 512 / Iter: 7	Ethernet - 001	Ethernet - 002	S4600-24X2C-Endpoint Set-1 - Flow Group 0001	98.59	98.59	2316582.8	9488.72	Tx : Rx : Loss : Loss% :	46331649 46331649 0 0.000
Trial: 1 / FS: 512 / Iter: 8	Ethernet - 001	Ethernet - 002	S4600-24X2C-Endpoint Set-1 - Flow Group 0001	99.30	99.30	2333105.5	9556.40	Tx : Rx : Loss : Loss% :	46662065 46662065 0 0.000
Trial: 1 / FS: 512 / Iter: 9	Ethernet - 001	Ethernet - 002	S4600-24X2C-Endpoint Set-1 - Flow Group 0001	100.00	100.00	2349624.1	9624.06	Tx : Rx : Loss : Loss% :	46992481 46992481 0 0.000
Trial: 1 / FS: 1024 / Iter: 1	Ethernet - 001	Ethernet - 002	S4600-24X2C-Endpoint Set-1 - Flow Group 0001	10.00	10.00	119731.8	980.84	Tx : Rx : Loss : Loss% :	2394636 2394636 0 0.000
Trial: 1 / FS: 1024 / Iter: 2	Ethernet - 001	Ethernet - 002	S4600-24X2C-Endpoint Set-1 - Flow Group 0001	55.00	55.00	658525.0	5394.64	Tx : Rx : Loss : Loss% :	13170498 13170498 0 0.000
Trial: 1 / FS: 1024 / Iter: 3	Ethernet - 001	Ethernet - 002	S4600-24X2C-Endpoint Set-1 - Flow Group 0001	77.50	77.50	927921.5	7601.53	Tx : Rx : Loss : Loss% :	18558429 18558429 0 0.000
Trial: 1 / FS: 1024 / Iter: 4	Ethernet - 001	Ethernet - 002	S4600-24X2C-Endpoint Set-1 - Flow Group 0001	88.75	88.75	1062619.9	8704.98	Tx : Rx : Loss : Loss% :	21252395 21252395 0 0.000
Trial: 1 / FS: 1024 / Iter: 5	Ethernet - 001	Ethernet - 002	S4600-24X2C-Endpoint Set-1 - Flow Group 0001	94.38	94.38	1129969.4	9256.71	Tx : Rx : Loss : Loss% :	22599377 22599377 0 0.000
Trial: 1 / FS: 1024 / Iter: 6	Ethernet - 001	Ethernet - 002	S4600-24X2C-Endpoint Set-1 - Flow Group 0001	97.19	97.19	1163643.8	9532.57	Tx : Rx : Loss : Loss% :	23272869 23272869 0 0.000
Trial: 1 / FS: 1024 / Iter: 7	Ethernet - 001	Ethernet - 002	S4600-24X2C-Endpoint Set-1 - Flow Group 0001	98.59	98.59	1180480.8	9670.50	Tx : Rx : Loss : Loss% :	23609614 23609614 0 0.000

Trial: 1 / FS: 1024 / Iter: 8	Ethernet - 001	Ethernet - 002	S4600-24X2C-Endpoint Set-1 - Flow Group 0001	99.30	99.30	1188899.4	9739.46	Tx : Rx : Loss : Loss% :	23777987 23777987 0 0.000
Trial: 1 / FS: 1024 / Iter: 9	Ethernet - 001	Ethernet - 002	S4600-24X2C-Endpoint Set-1 - Flow Group 0001	100.00	100.00	1197318.0	9808.43	Tx : Rx : Loss : Loss% :	23946360 23946360 0 0.000
Trial: 1 / FS: 1280 / Iter: 1	Ethernet - 001	Ethernet - 002	S4600-24X2C-Endpoint Set-1 - Flow Group 0001	10.00	10.00	96153.8	984.62	Tx : Rx : Loss : Loss% :	1923077 1923077 0 0.000
Trial: 1 / FS: 1280 / Iter: 2	Ethernet - 001	Ethernet - 002	S4600-24X2C-Endpoint Set-1 - Flow Group 0001	55.00	55.00	528846.3	5415.39	Tx : Rx : Loss : Loss% :	10576923 10576923 0 0.000
Trial: 1 / FS: 1280 / Iter: 3	Ethernet - 001	Ethernet - 002	S4600-24X2C-Endpoint Set-1 - Flow Group 0001	77.50	77.50	745192.5	7630.77	Tx : Rx : Loss : Loss% :	14903846 14903846 0 0.000
Trial: 1 / FS: 1280 / Iter: 4	Ethernet - 001	Ethernet - 002	S4600-24X2C-Endpoint Set-1 - Flow Group 0001	88.75	88.75	853365.8	8738.47	Tx : Rx : Loss : Loss% :	17067308 17067308 0 0.000
Trial: 1 / FS: 1280 / Iter: 5	Ethernet - 001	Ethernet - 002	S4600-24X2C-Endpoint Set-1 - Flow Group 0001	94.38	94.38	907452.0	9292.31	Tx : Rx : Loss : Loss% :	18149038 18149038 0 0.000
Trial: 1 / FS: 1280 / Iter: 6	Ethernet - 001	Ethernet - 002	S4600-24X2C-Endpoint Set-1 - Flow Group 0001	97.19	97.19	934495.5	9569.23	Tx : Rx : Loss : Loss% :	18689904 18689904 0 0.000
Trial: 1 / FS: 1280 / Iter: 7	Ethernet - 001	Ethernet - 002	S4600-24X2C-Endpoint Set-1 - Flow Group 0001	98.59	98.59	948016.8	9707.69	Tx : Rx : Loss : Loss% :	18960337 18960337 0 0.000
Trial: 1 / FS: 1280 / Iter: 8	Ethernet - 001	Ethernet - 002	S4600-24X2C-Endpoint Set-1 - Flow Group 0001	99.30	99.30	954777.8	9776.93	Tx : Rx : Loss : Loss% :	19095553 19095553 0 0.000
Trial: 1 / FS: 1280 / Iter: 9	Ethernet - 001	Ethernet - 002	S4600-24X2C-Endpoint Set-1 - Flow Group 0001	100.00	100.00	961538.5	9846.15	Tx : Rx : Loss : Loss% :	19230769 19230769 0 0.000
Trial: 1 / FS: 1518 / Iter: 1	Ethernet - 001	Ethernet - 002	S4600-24X2C-Endpoint Set-1 - Flow Group 0001	10.00	10.00	81274.4	987.00	Tx : Rx : Loss : Loss% :	1625488 1625488 0 0.000
Trial: 1 / FS: 1518 / Iter: 2	Ethernet - 001	Ethernet - 002	S4600-24X2C-Endpoint Set-1 - Flow Group 0001	55.00	55.00	447009.2	5428.48	Tx : Rx : Loss : Loss% :	8940182 8940182 0 0.000
Trial: 1 / FS: 1518 / Iter: 3	Ethernet - 001	Ethernet - 002	S4600-24X2C-Endpoint Set-1 - Flow Group 0001	77.50	77.50	629876.6	7649.22	Tx : Rx : Loss : Loss% :	12597529 12597529 0 0.000
Trial: 1 / FS: 1518 / Iter: 4	Ethernet - 001	Ethernet - 002	S4600-24X2C-Endpoint Set-1 - Flow Group 0001	88.75	88.75	721310.4	8759.59	Tx : Rx : Loss : Loss% :	14426203 14426203 0 0.000

Trial: 1 / FS: 1518 / Iter: 5	Ethernet - 001	Ethernet - 002	S4600-24X2C-Endpoint Set-1 - Flow Group 0001	94.38	94.38	767027.4	9314.78	Tx : Rx : Loss : Loss% :	15340540 15340540 0 0.000
Trial: 1 / FS: 1518 / Iter: 6	Ethernet - 001	Ethernet - 002	S4600-24X2C-Endpoint Set-1 - Flow Group 0001	97.19	97.19	789885.5	9592.37	Tx : Rx : Loss : Loss% :	15797708 15797708 0 0.000
Trial: 1 / FS: 1518 / Iter: 7	Ethernet - 001	Ethernet - 002	S4600-24X2C-Endpoint Set-1 - Flow Group 0001	98.59	98.59	801314.7	9731.17	Tx : Rx : Loss : Loss% :	16026292 16026292 0 0.000
Trial: 1 / FS: 1518 / Iter: 8	Ethernet - 001	Ethernet - 002	S4600-24X2C-Endpoint Set-1 - Flow Group 0001	99.30	99.30	807029.2	9800.56	Tx : Rx : Loss : Loss% :	16140584 16140584 0 0.000
Trial: 1 / FS: 1518 / Iter: 9	Ethernet - 001	Ethernet - 002	S4600-24X2C-Endpoint Set-1 - Flow Group 0001	100.00	100.00	812743.8	9869.96	Tx : Rx : Loss : Loss% :	16254876 16254876 0 0.000

RFC2544 - Throughput/Latency - Iteration Statistics - Part 2 of 2

Trial / Framesize / Iteration	Tx Port	Rx Port	Flow Group	Min Latency (ns)	Max Latency (ns)	Avg Latency (ns)
Trial: 1 / FS: 64 / Iter: 1	Ethernet - 001	Ethernet - 002	S4600-24X2-Endpoint Set-1 - Flow Group 0001	572	785	616.00
Trial: 1 / FS: 64 / Iter: 2	Ethernet - 001	Ethernet - 002	S4600-24X2C-Endpoint Set-1 - Flow Group 0001	575	892	617.00
Trial: 1 / FS: 64 / Iter: 3	Ethernet - 001	Ethernet - 002	S4600-24X2-Endpoint Set-1 - Flow Group 0001	577	920	619.00
Trial: 1 / FS: 64 / Iter: 4	Ethernet - 001	Ethernet - 002	S4600-24X2-Endpoint Set-1 - Flow Group 0001	585	875	622.00
Trial: 1 / FS: 64 / Iter: 5	Ethernet - 001	Ethernet - 002	S4600-24X2-Endpoint Set-1 - Flow Group 0001	590	915	627.00
Trial: 1 / FS: 64 / Iter: 6	Ethernet - 001	Ethernet - 002	S4600-24X2C-Endpoint Set-1 - Flow Group 0001	605	935	634.00
Trial: 1 / FS: 64 / Iter: 7	Ethernet - 001	Ethernet - 002	S4600-24X2C-Endpoint Set-1 - Flow Group 0001	600	665	640.00
Trial: 1 / FS: 64 / Iter: 8	Ethernet - 001	Ethernet - 002	S4600-24X2C-Endpoint Set-1 - Flow Group 0001	590	665	645.00
Trial: 1 / FS: 64 / Iter: 9	Ethernet - 001	Ethernet - 002	S4600-24X2C-Endpoint Set-1 - Flow Group 0001	632	667	658.00
Trial: 1 / FS: 128 / Iter: 1	Ethernet - 001	Ethernet - 002	S4600-24X2C-Endpoint Set-1 - Flow Group 0001	555	637	599.00
Trial: 1 / FS: 128 / Iter: 2	Ethernet - 001	Ethernet - 002	S4600-24X2C-Endpoint Set-1 - Flow Group 0001	555	782	599.00
Trial: 1 / FS: 128 / Iter: 3	Ethernet - 001	Ethernet - 002	S4600-24X2C-Endpoint Set-1 - Flow Group 0001	555	817	599.00
Trial: 1 / FS: 128 / Iter: 4	Ethernet - 001	Ethernet - 002	S4600-24X2C-Endpoint Set-1 - Flow Group 0001	555	875	599.00
Trial: 1 / FS: 128 / Iter: 5	Ethernet - 001	Ethernet - 002	S4600-24X2C-Endpoint Set-1 - Flow Group 0001	572	835	610.00
Trial: 1 / FS: 128 / Iter: 6	Ethernet - 001	Ethernet - 002	S4600-24X2C-Endpoint Set-1 - Flow Group 0001	577	845	618.00
Trial: 1 / FS: 128 / Iter: 7	Ethernet - 001	Ethernet - 002	S4600-24X2C-Endpoint Set-1 - Flow Group 0001	600	857	623.00
Trial: 1 / FS: 128 / Iter: 8	Ethernet - 001	Ethernet - 002	S4600-24X2C-Endpoint Set-1 - Flow Group 0001	577	647	627.00
Trial: 1 / FS: 128 / Iter: 9	Ethernet - 001	Ethernet - 002	S4600-24X2C-Endpoint Set-1 - Flow Group 0001	605	647	639.00
Trial: 1 / FS: 256 / Iter: 1	Ethernet - 001	Ethernet - 002	S4600-24X2C-Endpoint Set-1 - Flow Group 0001	617	705	664.00

Trial: 1 / FS: 256 / Iter: 2	Ethernet - 001	Ethernet - 002	S4600-24X2C-Endpoint Set-1 - Flow Group 0001	617	707	664.00
Trial: 1 / FS: 256 / Iter: 3	Ethernet - 001	Ethernet - 002	S4600-24X2C-Endpoint Set-1 - Flow Group 0001	617	832	664.00
Trial: 1 / FS: 256 / Iter: 4	Ethernet - 001	Ethernet - 002	S4600-24X2C-Endpoint Set-1 - Flow Group 0001	635	935	669.00
Trial: 1 / FS: 256 / Iter: 5	Ethernet - 001	Ethernet - 002	S4600-24X2C-Endpoint Set-1 - Flow Group 0001	625	877	675.00
Trial: 1 / FS: 256 / Iter: 6	Ethernet - 001	Ethernet - 002	S4600-24X2C-Endpoint Set-1 - Flow Group 0001	652	902	679.00
Trial: 1 / FS: 256 / Iter: 7	Ethernet - 001	Ethernet - 002	S4600-24X2C-Endpoint Set-1 - Flow Group 0001	665	905	685.00
Trial: 1 / FS: 256 / Iter: 8	Ethernet - 001	Ethernet - 002	S4600-24X2C-Endpoint Set-1 - Flow Group 0001	657	920	689.00
Trial: 1 / FS: 256 / Iter: 9	Ethernet - 001	Ethernet - 002	S4600-24X2C-Endpoint Set-1 - Flow Group 0001	630	942	705.00
Trial: 1 / FS: 512 / Iter: 1	Ethernet - 001	Ethernet - 002	S4600-24X2C-Endpoint Set-1 - Flow Group 0001	622	707	666.00
Trial: 1 / FS: 512 / Iter: 2	Ethernet - 001	Ethernet - 002	S4600-24X2C-Endpoint Set-1 - Flow Group 0001	620	707	666.00
Trial: 1 / FS: 512 / Iter: 3	Ethernet - 001	Ethernet - 002	S4600-24X2C-Endpoint Set-1 - Flow Group 0001	620	707	666.00
Trial: 1 / FS: 512 / Iter: 4	Ethernet - 001	Ethernet - 002	S4600-24X2C-Endpoint Set-1 - Flow Group 0001	620	837	666.00
Trial: 1 / FS: 512 / Iter: 5	Ethernet - 001	Ethernet - 002	S4600-24X2C-Endpoint Set-1 - Flow Group 0001	632	877	670.00
Trial: 1 / FS: 512 / Iter: 6	Ethernet - 001	Ethernet - 002	S4600-24X2C-Endpoint Set-1 - Flow Group 0001	645	900	677.00
Trial: 1 / FS: 512 / Iter: 7	Ethernet - 001	Ethernet - 002	S4600-24X2C-Endpoint Set-1 - Flow Group 0001	652	900	681.00
Trial: 1 / FS: 512 / Iter: 8	Ethernet - 001	Ethernet - 002	S4600-24X2C-Endpoint Set-1 - Flow Group 0001	635	915	685.00
Trial: 1 / FS: 512 / Iter: 9	Ethernet - 001	Ethernet - 002	S4600-24X2C-Endpoint Set-1 - Flow Group 0001	680	942	705.00
Trial: 1 / FS: 1024 / Iter: 1	Ethernet - 001	Ethernet - 002	S4600-24X2C-Endpoint Set-1 - Flow Group 0001	672	755	716.00
Trial: 1 / FS: 1024 / Iter: 2	Ethernet - 001	Ethernet - 002	S4600-24X2C-Endpoint Set-1 - Flow Group 0001	672	755	716.00
Trial: 1 / FS: 1024 / Iter: 3	Ethernet - 001	Ethernet - 002	S4600-24X2C-Endpoint Set-1 - Flow Group 0001	672	755	716.00
Trial: 1 / FS: 1024 / Iter: 4	Ethernet - 001	Ethernet - 002	S4600-24X2C-Endpoint Set-1 - Flow Group 0001	672	755	716.00

Trial: 1 / FS: 1024 / Iter: 5	Ethernet - 001	Ethernet - 002	S4600-24X2C-Endpoint Set-1 - Flow Group 0001	672	755	716.00
Trial: 1 / FS: 1024 / Iter: 6	Ethernet - 001	Ethernet - 002	S4600-24X2C-Endpoint Set-1 - Flow Group 0001	672	962	716.00
Trial: 1 / FS: 1024 / Iter: 7	Ethernet - 001	Ethernet - 002	S4600-24X2C-Endpoint Set-1 - Flow Group 0001	677	962	721.00
Trial: 1 / FS: 1024 / Iter: 8	Ethernet - 001	Ethernet - 002	S4600-24X2C-Endpoint Set-1 - Flow Group 0001	700	957	731.00
Trial: 1 / FS: 1024 / Iter: 9	Ethernet - 001	Ethernet - 002	S4600-24X2C-Endpoint Set-1 - Flow Group 0001	732	995	754.00
Trial: 1 / FS: 1280 / Iter: 1	Ethernet - 001	Ethernet - 002	S4600-24X2C-Endpoint Set-1 - Flow Group 0001	617	705	664.00
Trial: 1 / FS: 1280 / Iter: 2	Ethernet - 001	Ethernet - 002	S4600-24X2C-Endpoint Set-1 - Flow Group 0001	617	705	663.00
Trial: 1 / FS: 1280 / Iter: 3	Ethernet - 001	Ethernet - 002	S4600-24X2C-Endpoint Set-1 - Flow Group 0001	617	705	663.00
Trial: 1 / FS: 1280 / Iter: 4	Ethernet - 001	Ethernet - 002	S4600-24X2C-Endpoint Set-1 - Flow Group 0001	615	705	663.00
Trial: 1 / FS: 1280 / Iter: 5	Ethernet - 001	Ethernet - 002	S4600-24X2C-Endpoint Set-1 - Flow Group 0001	620	705	663.00
Trial: 1 / FS: 1280 / Iter: 6	Ethernet - 001	Ethernet - 002	S4600-24X2C-Endpoint Set-1 - Flow Group 0001	620	705	663.00
Trial: 1 / FS: 1280 / Iter: 7	Ethernet - 001	Ethernet - 002	S4600-24X2C-Endpoint Set-1 - Flow Group 0001	620	865	663.00
Trial: 1 / FS: 1280 / Iter: 8	Ethernet - 001	Ethernet - 002	S4600-24X2C-Endpoint Set-1 - Flow Group 0001	620	880	664.00
Trial: 1 / FS: 1280 / Iter: 9	Ethernet - 001	Ethernet - 002	S4600-24X2C-Endpoint Set-1 - Flow Group 0001	655	935	702.00
Trial: 1 / FS: 1518 / Iter: 1	Ethernet - 001	Ethernet - 002	S4600-24X2C-Endpoint Set-1 - Flow Group 0001	622	707	667.00
Trial: 1 / FS: 1518 / Iter: 2	Ethernet - 001	Ethernet - 002	S4600-24X2C-Endpoint Set-1 - Flow Group 0001	622	707	668.00
Trial: 1 / FS: 1518 / Iter: 3	Ethernet - 001	Ethernet - 002	S4600-24X2C-Endpoint Set-1 - Flow Group 0001	622	707	668.00
Trial: 1 / FS: 1518 / Iter: 4	Ethernet - 001	Ethernet - 002	S4600-24X2C-Endpoint Set-1 - Flow Group 0001	622	890	668.00
Trial: 1 / FS: 1518 / Iter: 5	Ethernet - 001	Ethernet - 002	S4600-24X2C-Endpoint Set-1 - Flow Group 0001	622	707	668.00
Trial: 1 / FS: 1518 / Iter: 6	Ethernet - 001	Ethernet - 002	S4600-24X2C-Endpoint Set-1 - Flow Group 0001	622	707	668.00
Trial: 1 / FS: 1518 / Iter: 7	Ethernet - 001	Ethernet - 002	S4600-24X2C-Endpoint Set-1 - Flow Group 0001	622	707	668.00

Trial: 1 / FS: 1518 / Iter: 8	Ethernet - 001	Ethernet - 002	S4600-24X2C-Endpoint Set-1 - Flow Group 0001	632	707	673.00
Trial: 1 / FS: 1518 / Iter: 9	Ethernet - 001	Ethernet - 002	S4600-24X2C-Endpoint Set-1 - Flow Group 0001	647	940	705.00

Theoretical maximum Frame Rates (frames/second) for different frame sizes (bytes)

Speed	64	128	256	512	1024	1280	1518
10 Mbps	14881	8446	4529	2350	1198	962	813
100 Mbps	148810	84460	45290	23497	11973	9616	8128
1000 Mbps	1488096	844595	452899	234963	119732	96154	81275
10 Gbps	14880952	8445946	4528986	2349625	1197318	961539	812744
25 Gbps	37202380	21114864	11322463	5874060	2993295	2403846	2031859
40 Gbps	59523809	33783783	18115942	9398496	4789272	3846153	3250975
100 Gbps	148809523	84459459	45289855	23496240	11973180	9615384	8127438
155 Mbps (Oc - 3)	288000	145116	72840	36491	18263	14614	12324
622 Mbps (Oc - 12)	1152000	580465	291362	145965	73054	58454	49296
2488 Mbps (Oc - 48)	4608000	2321860	1165447	583860	292215	233817	197182
9952 Mbps (Oc - 192)	18432000	9287442	4661790	2335439	1168859	935270	788730